

FOLDING FABRIC PARTITIONS

The economical way
of managing space
more effectively



Installation

Once we receive an enquiry we will prepare a full estimate. Once this is accepted and the partitions are completed, our experienced and highly trained personnel can handle all the installation work. This can only take place once the timber surround and any associated works have been completed by appropriate parties. We can provide a quotation for this if required.

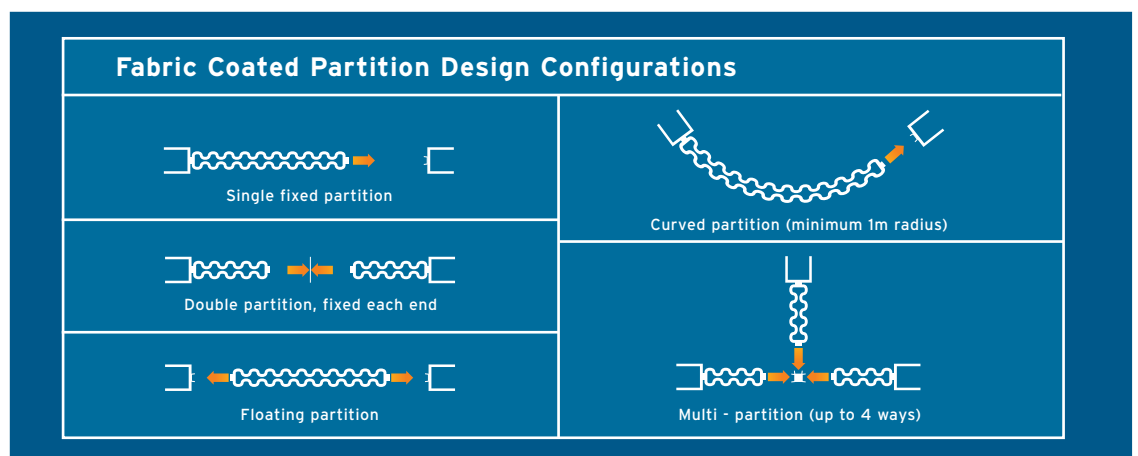
When the opening is ready, with the floor and ceiling finishes in position, one of our expert team will perform a site survey to check everything is ready. Our specialist installers then complete the job.

Another option is for us to provide the partitions on a "supply only" basis. The purchaser simply submits their order clearly stating the required dimensions. We then make the partition and deliver it to site, with full fitting instructions, for the customer to install.

Timber Head

Wideline	Head	Jambs
Non Acoustic	150 x 50	100 x 25 min
Acoustic	220 x 50	100 x 25 min

Slimline	Head	Jambs
Non Acoustic	100 x 50	100 x 25 min
Acoustic	150 x 50	100 x 25 min

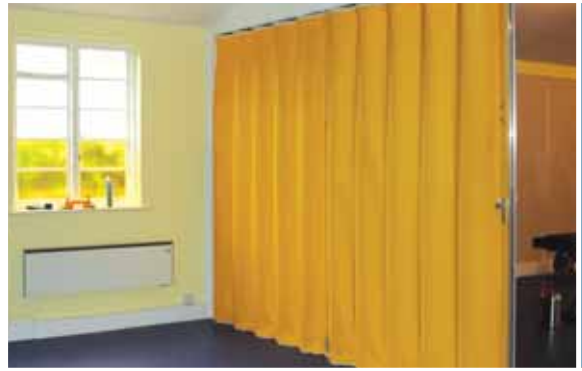


A solution that has everything to recommend it

Folding fabric partitions are a versatile work space solution for offices, schools, nurseries, hospitals, leisure centres, hotels and any interior that must have the flexibility to operate as a single large space one minute, then be subdivided into smaller units the next. They are **economical, convenient** and **easy to operate**.

- The partition consists of an internal pantograph steel framework covered with robust vinyl coated fabric that runs on a heavy duty aluminium track. This fully hinged concertina system is either hung from a suitable support (so no floor track is required), or bottom rolling with an associated top guide track.
- The covering is durable, light-fast, flame retardant and rot-proof. It will not crack or craze and is backed by a 5 year warranty. Water based inks make it odourless, plus it is fully washable and stain resistant. The material even resists the growth of mildew, mould, fungi and bacteria.
- Each system is specifically manufactured to suit the opening dimensions and can be supplied in a wide range of configurations - single, double, or any combination of two-way, three-way or four-way layouts. The partitions can even be curved to a 1 metre radius.





Wideline

NEW

The Wideline system has larger folds of material. This means it is less intrusive when in the stacked position - whilst taking up a larger section of the wall, it only protrudes half as far into the opening as the conventional accordion partition.

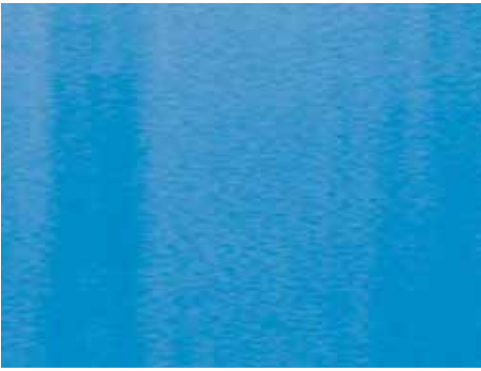
Stack Dimensions (per leaf)		
	Partition	Wideline
	Standard 100	1/12 Partition with plus 125mm
	Acoustic 200	1/11 Partition with plus 125mm
	Acoustic 300	1/10 Partition with plus 125mm
	Acoustic 400	1/10 Partition with plus 125mm

Slimline

The Slimline system has smaller folds of material. This means it won't sit as closely to the side wall as the Wideline system, but the width of the stack is less.



Stack Dimensions (per leaf)		
Stack	Partition	Slimline
	Standard 100	1/7 Partition with plus 125mm
	Acoustic 200	1/5 Partition with plus 125mm
	Acoustic 300	1/4 Partition with plus 125mm
	Acoustic 400	1/4 Partition with plus 125mm



A choice of acoustic options

We offer four different levels of sound reduction:

Standard 100

Has a tested $R_{w,d} > 15$. Weighs 8kg/m^2 . This option is just a screen and offers no significant acoustic reduction. If the leaf area exceeds 18m^2 then intermediate posts are used.

Acoustic 200

Has a tested $R_{w,d} > 24$. Weighs 10kg/m^2 . Made from layers of quilted fibreglass. Open cell foam strips are fitted between all perimeter channels. Sweep strips are fitted top and bottom. If the leaf area exceeds 14m^2 then intermediate posts are used.

Acoustic 300

Has a tested $R_{w,d} > 30$. Weighs 18kg/m^2 . Made from layers of dense PVC and quilted fibreglass. Open cell foam strips are fitted between all perimeter channels. Sweep strips are fitted top and bottom. If the leaf area exceeds 8m^2 then intermediate posts are used.

Acoustic 400

Pending testing $R_{w,d} > 35$. Weighs 22kg/m^2 . Made from further layers of dense PVC and high grade quilted fibreglass. Open cell foam stops are fitted between all perimeter channels. Sweep strips are fitted top and bottom. If the leaf area exceeds 7m^2 then intermediate posts are used.

When considering acoustic partitioning it is essential that the surrounding walls, ceiling and floors do not allow sound leakage. Contact us for further information regarding correct installation.





Special situations

The vinyl can feature a clear see-thru panel for situations, such as hospitals, where it is important to observe what is happening on the other side of the partition.

The system can be floor supported with a top guide rail if no load bearing structure is available.

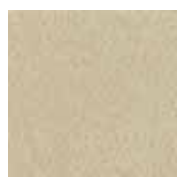
The track can be curved to run around corners.



- Vision Panels
- Floor Supported
- Curved
- Flame Retardant



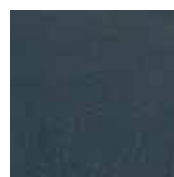
Maritime - colour options



Oatmeal
YVA009



Royal Blue
YVA038



Slate Black
YVA039



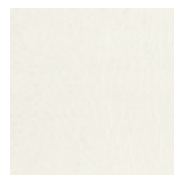
Regal Blue
YVA037



Blue Bay
YVA030



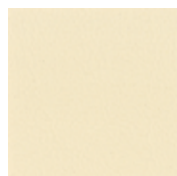
Sport Purple
YVA043



Mystic White
YVA008



Off White
YVA036



Champagne
YVA003



Latte
YVA046



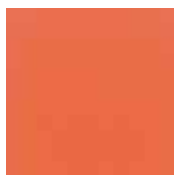
Lite beige
YVA047



Lollipop Red
YVA035



Yellow
YVA042



Orange
YVA044



Lime
YVA045



Laguna Green
YVA034



Hearty Burgundy
YVA033



Smoke Grey
YVA040



Cinder Grey
YVA031



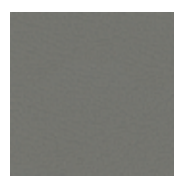
Grey Light
YVA032



Tide Pool Green
YVA041



Ivory
YVA048



Moonrock
YVA050



Sandsurf
YVA049



Technical Information

Maritime

Weight 660 gsm (Knit back)

Thickness 1.07 mm

Width 137 cms

Roll length 25 metres

Flame retardant

Conforms to BS 5852 Part 1 1979

Ignition sources 'O' (cigarette) & '1' (match)

PreFixx® Protective Finish

- Outstanding stain resistance and cleanability - Most stains wash off easily with mild cleanser.
- Abrasion Resistance - easily passes 400,000 cycles Wyzenbeek test using #8 cotton duck; easily passes 60,000 cycles Wyzenbeek using steel wire screen.
- Resistant to common scuffing and burnishing.
- Eliminates blocking and prevents premature aging.
- Mildew Resistant.
- Bacteria restrictive growth.

Care and Cleaning

Day-to-day soil - remove ordinary dirt and smudges with a mild soap and warm water solution. Dry with a soft, lint - free cloth or towel. For more difficult stains, use a stronger detergent; however, follow the detergent manufacturer's instructions closely.

Special cleaning problems - many stains will be removed when these cleaning agents are used in the following order:

Step 1: Use nonabrasive household cleaners such as Formula 409® All-Purpose Spray Cleaner or Fantastik® Spray Cleaner with water and a soft cloth.

Step 2*: Use a solvent-type cleaner such as rubbing alcohol (isopropyl alcohol) liberally applied with a soft cloth. Dry area with another cloth, rinse with clean water and dry.

Step 3*: Use strong, active solvent cleaners such as nail polish remover (acetone/water) applied with a soft cloth. Stain should be removed with less than six (6) rubs; if stain persists after six rubs, stain has probably set** and may not be capable of being removed. Dry area with another cloth, rinse with clean water and dry.

*Caution: These solvents are highly flammable. Exercise proper care in cleaning and notify personnel in area of danger. Wear rubber gloves during all cleaning activity. Use caution in cleaning around buttons, stitching and wooden or decorative trim, since these solvents could easily damage such areas.

** Although vinyls protected with PreFixx are resistant to most common stains, some fabric dyes have the ability to create a permanent stain. To minimise any problems from these and other stains, it is recommended that as soon as they are noticed all stains should be cleaned, making sure the recommended cleaning steps are followed in order.

