

SPECIFICATION

Sector Reports:

- Education
- Refurbishment & Retrofit

Features:

- Doors, Windows, Entrance Systems, Blinds & Louvers
- Glass, Glazing & Solar Control
- Architectural Ironmongery
- Safety, Security & Fire Protection
- Heating, Ventilation & A/C

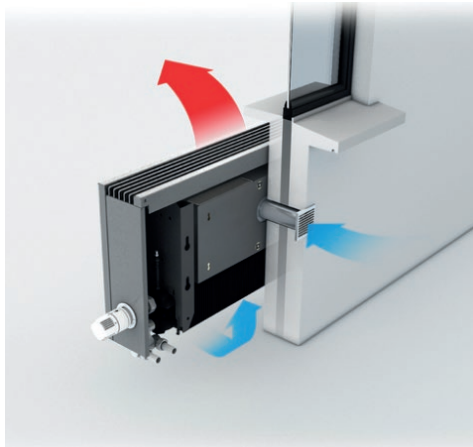
ABLOY UK Assess cyber security & supply chain integrity



Indoor air quality and its impact on school exam results

The way a school is designed can significantly impact pupils' productivity and overall wellbeing.

Andy Williams, Technical Consultant at Jaga, explains why investing in intelligent, efficient ventilation solutions can create an environment which allows pupils to thrive.



Poor Indoor Air Quality (IAQ) is often caused by little or no ventilation and a consequent build-up of CO₂ in the classroom.

"Therefore, the type of ventilation specified for an education facility is vital. Demand Controlled Ventilation (DCV) solutions, such as Jaga's Oxygen ventilation system, are able to regulate the intake of air into a classroom based on the changing levels of CO₂ in the atmosphere, expelling stale air at the same rate," said.

"The Oxygen system brings in outside air before filtering it, reducing lethargy and increasing concentration. Then, the unit's four mechanisms combine to create a controlled cycle of clean air, ensuring consistent circulation throughout the space, no matter what changes occur in the classroom throughout the day.

"This ensures a fully balanced system which creates an optimal environment for staff and students."

Jaga – Enquiry 38

High demand in Glasgow

Faced with the challenge of sub-dividing a multi-purpose school hall at the new Clyde campus, Style was required to address potential health and safety risks associated with manoeuvring moveable wall panels that would need to be over seven metres high and weighing in excess of half a metric tonne.

Style demonstrated their commitment to the Construction (Design & Management) Regulations 2015 and recommended combining a DORMA Variflex 100 SE moveable wall, which can be safely assembled on site, with the new DORMA programmable I-track.

Removing 90-degree corners, a key point of impact with such tall panels, the I-track consists of switches and curves which uses the kinetic energy from the panel itself to assist in moving it into and out of its parking pocket.

Style Scotland, regional arm of UK partitioning experts Style, has achieved phenomenal growth since its incorporation ten years ago. In that time, over 1300 operable walls have been installed with a sales value of over £10m. Last month alone, Style Scotland secured business to the value of £700K - a record figure that demonstrates just how far the business has grown.

Style – Enquiry 40



Gerflor provides top class flooring for school



Carronrange School in Scotland is an Additional Support Needs (ASN) facility providing a raft of support to pupils. When Falkirk Council required flooring for this education project they would turn to international flooring specialist Gerflor to supply 4000m² of flooring products that could deliver stunning looks, durability and performance. The vast cornucopia of products supplied would consist of Gerflor's award-winning Taralay Impression Control safety flooring, together with their Tarasafe Ultra and Tarasafe Ultra H2O. The Carronrange development would also specify Gerflor's GTI MAX and Mipolam SD products to further complete the huge overall flooring requirement.

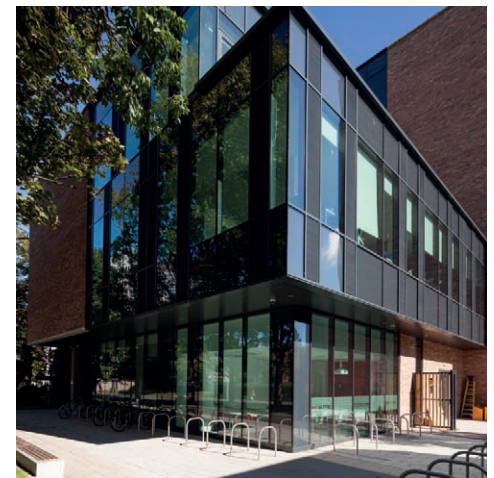
Gerflor – Enquiry 41



webermineral TF render marked 10/10 at school

High performance webermineral TF render has been specified for an extension to the Poyntzpass Primary School in Newry, Northern Ireland. Designed to overcome delays caused by wet weather conditions and low winter temperatures during application, webermineral TF was specified by Maurice Cushnie Architects Limited. webermineral TF, a through-coloured, textured decorative finish designed for use with multi-coat render systems including Weber's thermally efficient External Wall Insulation. This cementitious render can be applied at temperatures as low as 1°C. webermineral TF has rapid drying benefits that prevent wash-off in 1 hour.

Saint-Gobain Weber - Enquiry 39



Kingspan insulates services on visionary science building

The Kingspan Kooltherm FM Complete Pipe Insulation System and Kingspan Kooltherm FM Duct Insulation have been installed as part of Coventry University's flagship scientific teaching and research building, contributing towards the building's BREEAM 'Excellent' rating and delivering a high level of fire resistance performance through the use of intumescent lined Kingspan Kooltherm FireSleeves. The specification included 14,000 lm of Kingspan Kooltherm FM Pipe Insulation (as part of the Kingspan Kooltherm FM Complete Pipe Insulation System) and 5000m² of circular and rectangular Kingspan Kooltherm FM Duct Insulation.

Kingspan Insulation – Enquiry 42